

© 2021 OVS Recycling Ltd. All rights reserved. This document is the property of OVS Recycling Ltd and is intended for internal use only. It contains confidential information and is not to be distributed outside the company without the express written consent of OVS Recycling Ltd. Any unauthorized use or disclosure of this information is strictly prohibited. For more information, please contact us at info@ovsrecycling.co.uk.

Description

The EvoQuip Cobra 230R is a compact and highly versatile impact crusher, designed for efficient crushing performance across recycling and construction applications. Ideal for C&D waste, concrete, asphalt, and general recycling operations, this machine combines strong output with easy transport and excellent manoeuvrability on-site.

This 2021 machine has 3,800 hours, with approximately 2,800 crushing hours, and is in good working condition. Well maintained and ready to go straight to work, the crusher is equipped with a 1-deck screen and overband magnet for improved material separation and productivity. Located in Denmark.

Key Specifications

- Model: EvoQuip Cobra 230R
- Year: 2021
- Hours: 3,800
- Crushing hours: Approx. 2,800
- Crusher type: Impact crusher
- Screen: 1-deck screen
- Magnet: Overband magnet fitted
- Condition: Good working condition

Key Features

- Compact design - easy transport and fast setup
- Impact crushing system - ideal for concrete, asphalt, and C&D waste
- 1-deck screen - improved material sizing and efficiency
- Overband magnet - efficient metal separation

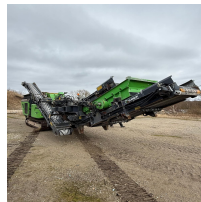


?? Well maintained â?? ready for immediate work
?? Versatile application â?? suitable for recycling and aggregate production

• Location: Denmark

Contact us for full specs, photos/video, pricing, or to arrange a viewing.

Meta Fields



Product Image Gallery