

Hammel VB 950 DK | 2021 | 4,200 Hours

Description

The **Hammel VB 950 DK** is a high production slow speed shredder built for demanding recycling and waste processing applications. Designed for strong performance and reliable operation, this machine is ideal for processing wood waste, bulky waste, and construction & demolition materials in heavy-duty recycling environments.

This **2021 machine has 4,200 hours and is in excellent condition.** The shredder has been completely checked, maintained, and cleaned, making it ready for immediate work. It also benefits from a factory rebuilt gearbox completed in 2024 and is fitted with metal shafts specification for demanding applications. Located in Belgium.

Key Specifications

- **Model:** Hammel VB 950 DK
- **Year:** 2021
- **Hours:** 4,200
- **Shredding system:** Slow speed shredder
- **Shaft specification:** Metal shafts
- **Condition:** Excellent condition

Key Features

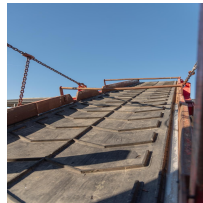
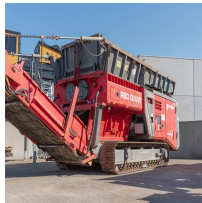
- High production shredder built for demanding recycling applications
- Factory rebuilt gearbox (2024) improved reliability and performance
- Metal shafts specification suitable for difficult materials
- Fully checked and maintained cleaned and ready for work
- Suitable for wood waste, bulky waste, and C&D material
- Strong and reliable design ideal for heavy-duty operations

• Location: Belgium

Contact us for full specs, photos/video, pricing, or to arrange a viewing.



Meta Fields



Product Image Gallery